

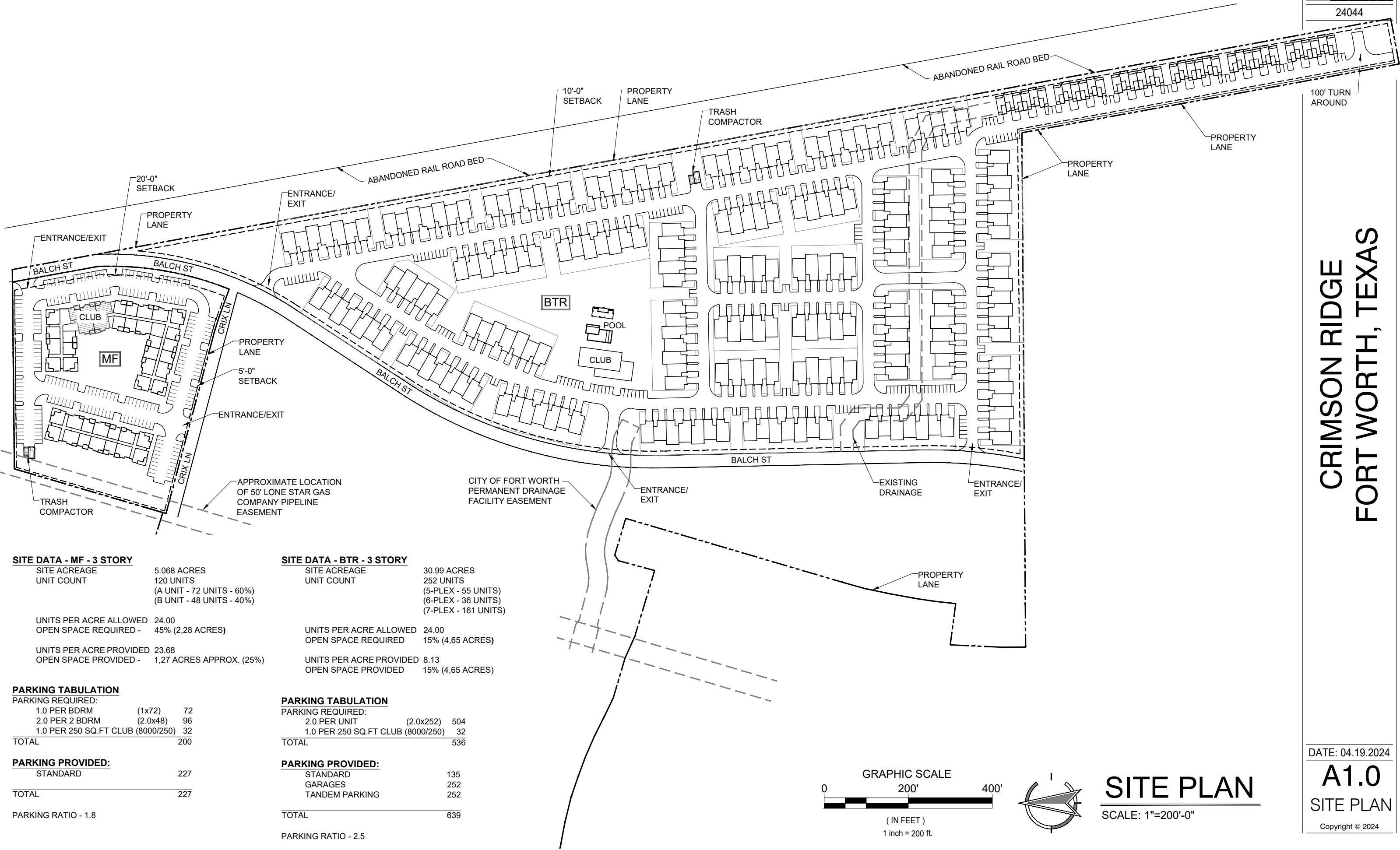
100' TURN
AROUND

CRIMSON RIDGE
FORT WORTH, TEXAS

DATE: 04.19.2024

A1.0
SITE PLAN

Copyright © 2024



SITE DATA - MF - 3 STORY

SITE ACREAGE	5.068 ACRES
UNIT COUNT	120 UNITS (A UNIT - 72 UNITS - 60%) (B UNIT - 48 UNITS - 40%)
UNITS PER ACRE ALLOWED	24.00
OPEN SPACE REQUIRED -	45% (2.28 ACRES)
UNITS PER ACRE PROVIDED	23.68
OPEN SPACE PROVIDED -	1.27 ACRES APPROX. (25%)

PARKING TABULATION

PARKING REQUIRED:		
1.0 PER BDRM	(1x72)	72
2.0 PER 2 BDRM	(2.0x48)	96
1.0 PER 250 SQ.FT CLUB (8000/250)		32
TOTAL		200

PARKING PROVIDED:

STANDARD	227
TOTAL	227

PARKING RATIO - 1.8

SITE DATA - BTR - 3 STORY

SITE ACREAGE	30.99 ACRES
UNIT COUNT	252 UNITS (5-PLEX - 55 UNITS) (6-PLEX - 36 UNITS) (7-PLEX - 161 UNITS)
UNITS PER ACRE ALLOWED	24.00
OPEN SPACE REQUIRED	15% (4.65 ACRES)
UNITS PER ACRE PROVIDED	8.13
OPEN SPACE PROVIDED	15% (4.65 ACRES)

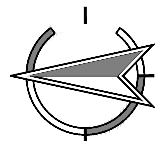
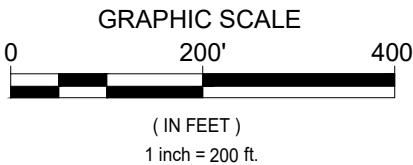
PARKING TABULATION

PARKING REQUIRED:		
2.0 PER UNIT	(2.0x252)	504
1.0 PER 250 SQ.FT CLUB (8000/250)		32
TOTAL		536

PARKING PROVIDED:

STANDARD	135
GARAGES	252
TANDEM PARKING	252
TOTAL	639

PARKING RATIO - 2.5



SITE PLAN

SCALE: 1"=200'-0"